

M7640



Fully Radiometric Thermal Imager with High Resolution 640 x 480 Detector

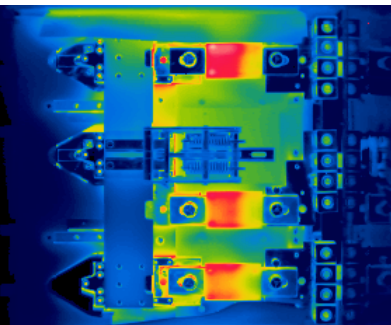
Easy-to-use, superior performance infrared camera with high-quality articulating 5.6 inch LCD—and four times the resolution of regular detectors



Features:

- 640 x 480 Resolution UFPD Detector
- Resolution of 0.06°C (at 30°C 30 Hz)
- Temperature Range -40°C to 2000°C
- Focus Range of 12" (30cm) to Infinity
- Real-time Image Recording
- Revolutionary DualVision Image Composite Functionality
- Image Transfer Using IEEE 1394 (Firewire®) Technology, USB 2.0, and Compact Flash card
- Viewfinder and 5.6" Articulating LCD
- Automatic level, gain and focus
- Multi-spot temperature measurement with emissivity settings

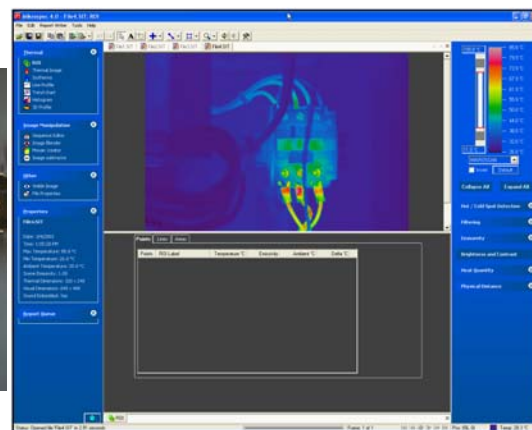
Sample Images:



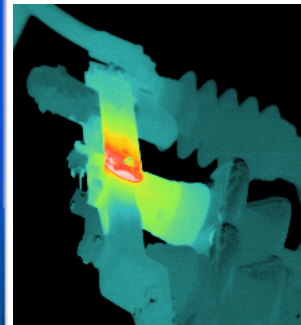
OL Fuses (thermal)



OL Fuses (visual)



Optional powerful MikroSpec 4.0 analyzing and report writing software.



14kV Hinge



THE INFRARED PROS

Technical Data:

M7640		
Performance	Temperature Range: -40°C to 500°C Measurement Accuracy: Field of View: Focus Range: Instantaneous FOV / Spatial Resolution: Image Update Rate: Resolution: Detector: Spectral Band:	Range 1: -20°C to 60°C Range 2: -40°C to 120°C Range 3: 0°C to 500°C (Optional Range 4: 200°C to 2000°C) ±2% or 2°C of reading 21.7°(H) x 16.4°(V) 30 cm to infinity (12" to infinity) 0.6 mrad 30 frames per second 0.06°C (at 30°C 30Hz) 640 (H) x 480 (V) Uncooled Focal Plane Array Microbolometer 8.0 to 14.0 µm
Display Functions	B&W/Color Image: Thermal/Visual Composite Image Display: Isothermal Band Display: Multi-Image Display: Multi-Sense Display:	Several palettes available Provided Max. 4 bands Replay 12 Thermal Images Provided
Visual Camera	Pixels: Effective Image Pixels: Field of View: Sensitivity: Fixed Focus Distance: Auto Exposure: Video Signal:	1.3 Megapixels 1280 (H) x 960 (V) pixels 30.1° (H) x 22.7°(V) 1 lux 30 cm to infinity (12" to infinity) Provided NTSC
Presentation	Image Processing Functions: Display Type: A/D Resolution: B&W/Color Image: Image Zoom: Annotation: Movie Recording:	Variable level/sense; Multi-point temperature display (4 pts); Multi-point emissivity display (4 pts); Temperature difference (@T) display; Max/Min (peak hold) temperature display; Alarm (full screen or specified box); 2x and 4x digital zoom (Run/Freeze); Box setting (max 5 boxes) Viewfinder and 5.6" articulating color LCD with auto switch 14 bit Several palettes available 2:1, 4:1 (with spatial filtering) Text and voice annotation (30 sec. per image) Real-time memory
Measurement	Measuring Functions: Signal to Noise (S/N) Improvement: Alarm: Interval Measurement: Emissivity Correction: Environmental Temp. Correction: Background Compensation: User Setup: Auto Functions:	Run/Freeze Off, S2, S8, S16 and spacial filter ON/OFF Screen display and alarm sound (ON/OFF) Recording on memory card: 2 to 3600 sec. interval; trigger function 0.10 to 1.00 (at 0.01 steps) Provided (including interval NUC) Provided Pre-registration of user setup (maximum 10 setups) Full automatic (level, sense, focus); level trace, auto gain control
Interface	Communication: Storage Device: Video Signal Output: Remote Control Operation:	RS-232/C Compact Flash Memory Card (stores thermal images in .SIT or .BMP file format; visible images in .SIT or .JPEG file format; and thermal/visual composite images in .BMP file format) NTSC/PAL composite video signal, S-video IEEE 1394 (Firewire®) Interface
Environmental	Operating Temperature: Storage Temperature (w/out batteries): Environmental Protection: Shock: Vibration:	-15°C to 50°C 90% Relative Humidity or less (not condensed) -40°C to 70°C 90% Relative Humidity or less (not condensed) IP 54 (IEC60529) 30G (IEC60068-2-27) 3G (IEC60068-2-6)
Power Source	Power Supply: Power Consumption: Battery Operating Time:	AC adaptor: 100V to 240V, DC 7.2V (nominal) Approx. 7W (typical) Approx. 2 hours 30 minutes (display shows battery status)
Physical Characteristics	Camera Dimensions: Camera Weight:	110mm (W) x 110mm (H) x 210mm (D) (excluding projections) 1.4kg (excluding battery and LCD); 1.7 kg including battery/LCD

Standard Accessories: (2) Li-Ion Batteries, Smart Battery Charger, AC Adapter and DC Interface Cable, Lens Cap, Shippable Carrying Case, Viewer Software, Neck Strap, Operating Manual on CD.

Mikron Infrared, Inc.

Thermal Imaging Division

1101 Elevation Street, Suite 3
Hancock, MI 49930

Tel: (906) 487-6060
Fax: (906) 487-6066

info@mikroninfrared.com
mikroninfrared.com

For More Information, Call:
1-888-506-3900



Mikron reserves the right to change specifications to reflect the latest changes in technology and improvements at any time without notice. These changes will be reflected in subsequent editions of our literature when warranted.