



LORD CORPORATION
 1665 Highland Drive
 Ann Arbor, MI 48108 USA
 734.973.8300
 734.973.2327 fax
 www.lord.com

Fan Balancing System Request for Quotation Data Sheet

		Date
Company:		Contact:
Address:		Phone:
City, State, Zip:		Fax:

Fan Type (Reference Typical Installation Methods on Page 2)

- Type I — Overhung Single Inlet
- Type II — Double Hung Single Inlet
- Type III — Double Hung Double Inlet Inside Bearings

Fan Details - Required for Quotation (Include units of measure where necessary)

RPM & Hp/Kw	_____	Bearing Center Distance	_____
Variable Speed (circle)	YES NO	Bearing Manufacturer	_____
Radius of Rotor	_____	Bearing Model(s) and Size(s)	_____
WR ² (Ref Fan GA Drawing)	_____	Overall Shaft Length	_____
Air Stream Temp	_____	Weight of Rotor Assembly	_____
Fan Housing Temp	_____	Shaft Growth at Float Bearing	_____
Cooling Wheel Used	YES NO	Type of Shaft Seal	_____

This information is necessary to determine the necessary correction capacity for the balancing system

Do you have past manual balance data	YES NO	If yes, provide the following information	_____
Starting Vibration Level	_____	Starting Vibration Phase Angle	_____
Balance Correction Weight	_____	Correction Radius	_____
Final Vibration Level	_____	Final Vibration Phase Angle	_____

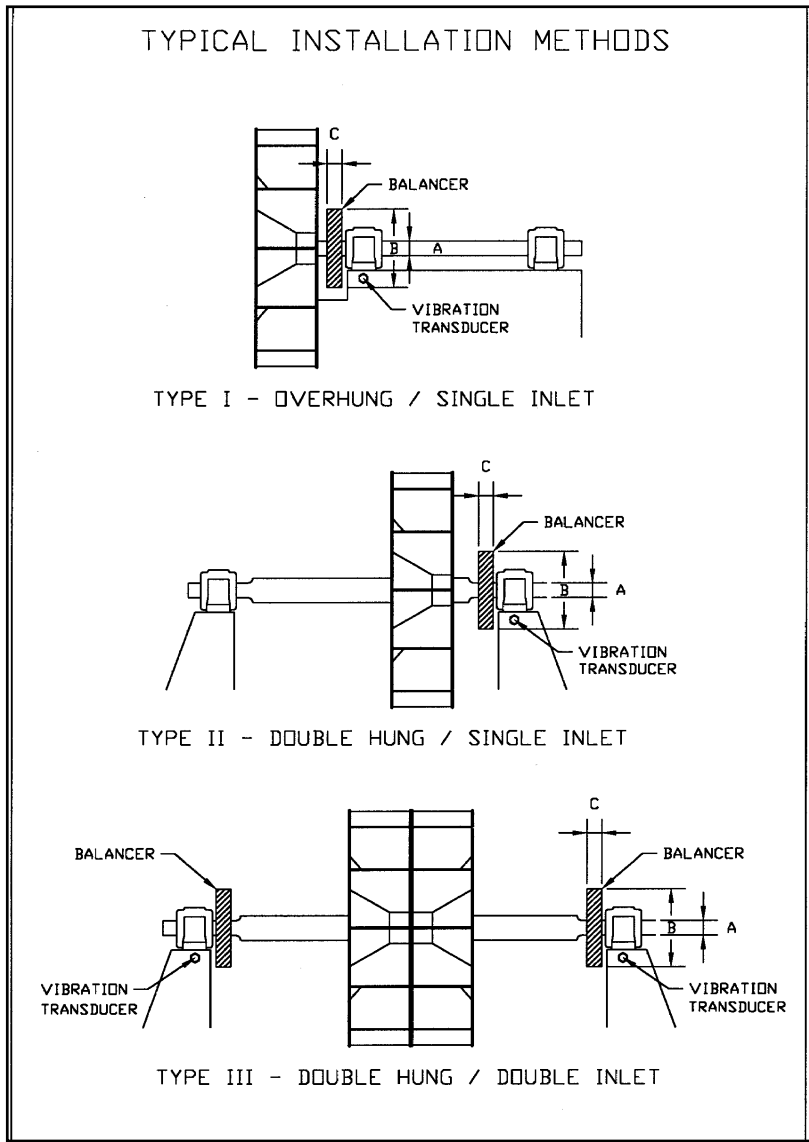
Critical Dimensions (Reference Typical Installation Methods on Page 2)

- _____ Shaft Mounting Diameter (See Dimension "A" on Type I - III)
- _____ Maximum Allowable Balancing System Diameter (See Dimension "B" on Type I - III)
- _____ Maximum Allowable Balancing System Width (See Dimension "C" on Type I - III)
- _____ Distance from Top of Bearing Pedestal to Centerline of Shaft

Note: Modifications to the fan housing or bearing pedestal to allow for the necessary axial and radial space to mount the balancing system may be required.

Additional Requested Information

- Copy of Fan General Arrangement Drawing (Fax or Mail)
- Copy of Fan Shaft Detail Drawing (Fax or Mail)
- Bearing Pedestal Dimensions (Fax or Mail)
- Planned Maintenance Outage Schedule (Installation Opportunities) _____
- Current Vibration Limits: Normal: _____ Alarm: _____ Trip: _____ Units: _____
- Current Vibration Monitoring System: _____
- Frequency of Shutdowns for Vibration Problems _____
- Duration of Outage for Vibration Problems _____
- Internal Fan Description/Location/ID Tag # _____
- Fan Manufacturer/Model #/Serial # _____
- Environment (Indoor/Outdoor, Temperature, Humidity) _____



Note: In the Typical Installation Methods drawing, label the following items using the corresponding number:

1. Location of the Fixed Bearing
2. Location of Float Bearing
3. Drive Motor

Note: Fill in any dimensions on the attached drawing to provide actual field measurements for features that may vary from the fan general arrangement drawing.

